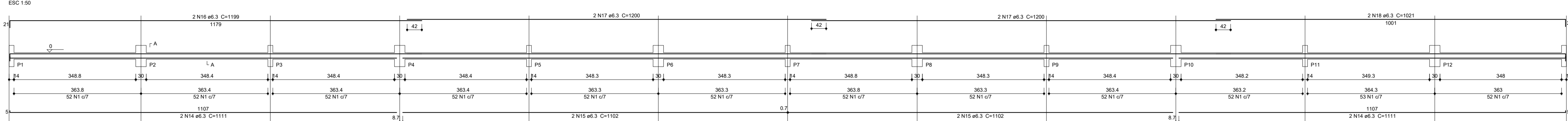
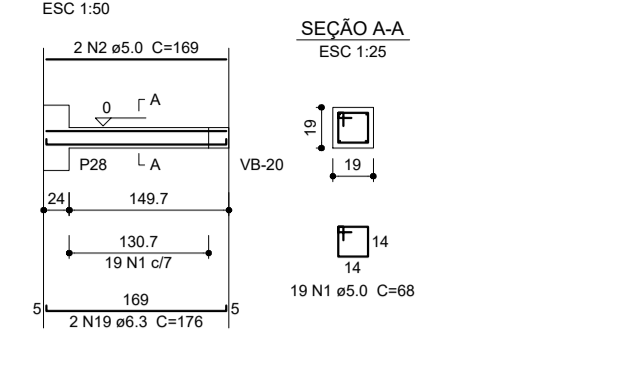


VB-1



VB-5

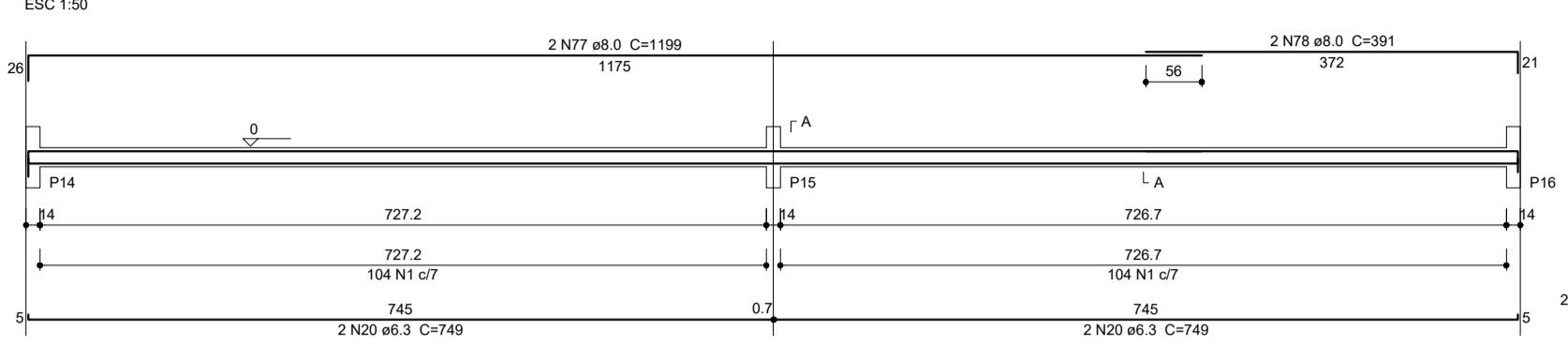


Resumo do aço

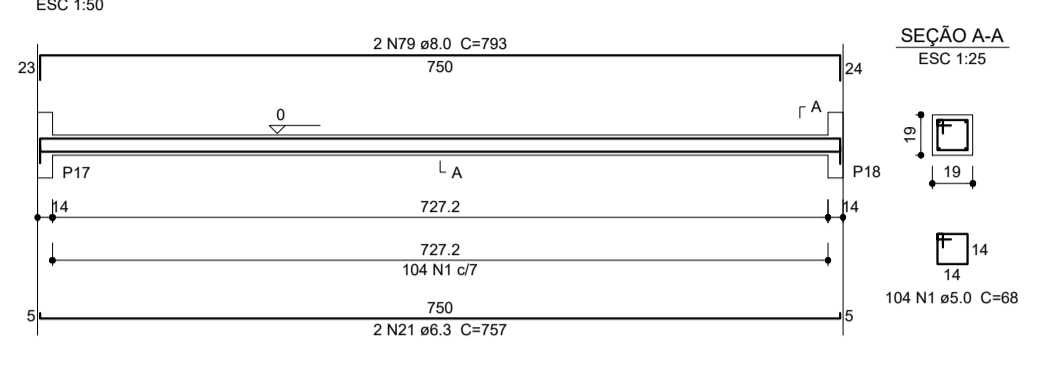
ACO	DIAM (mm)	C.TOTAL (m)	QUANT (Barras)	PESO (kg)
CA50	6.3	1200	100	293.6
CA60	6.0	43.8	8	25.1
CA60	5.0	3407.9	284	825.3
<b>PESO TOTAL (kg)</b>				
CA50	318.7			
CA60	825.3			

Volume de concreto (C-25) = 12.4 m³  
Área de forma = 195.72 m²

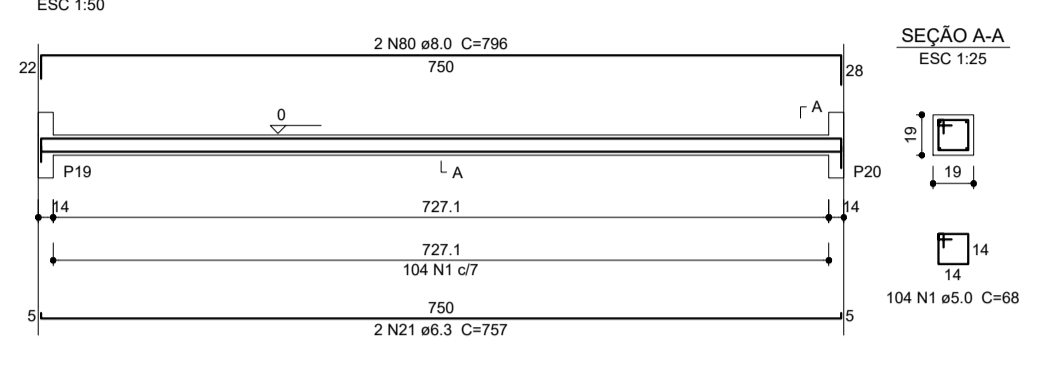
VB-2



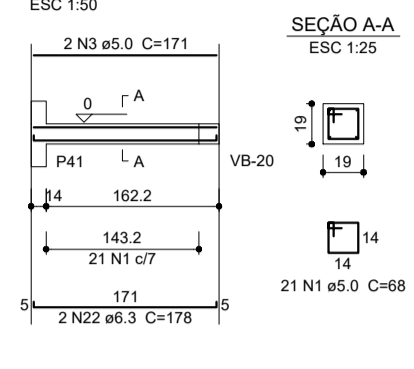
VB-3



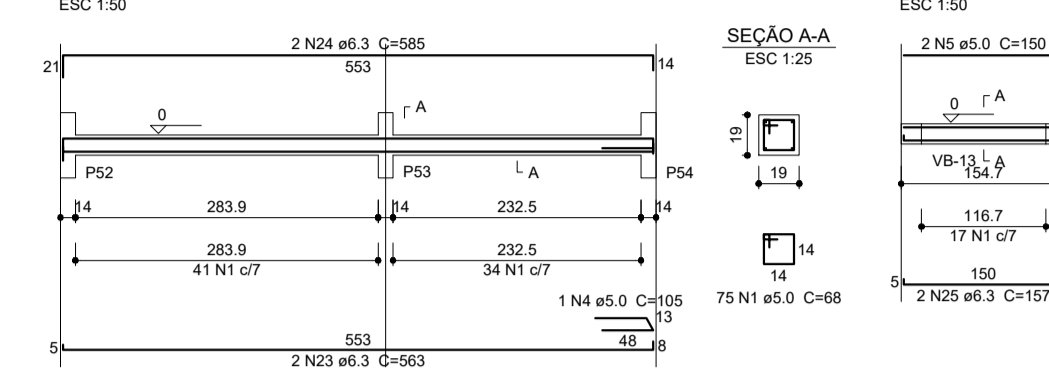
VB-4



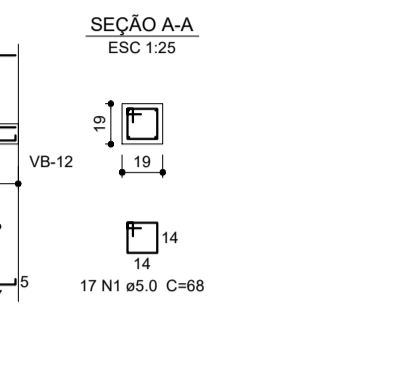
VB-6



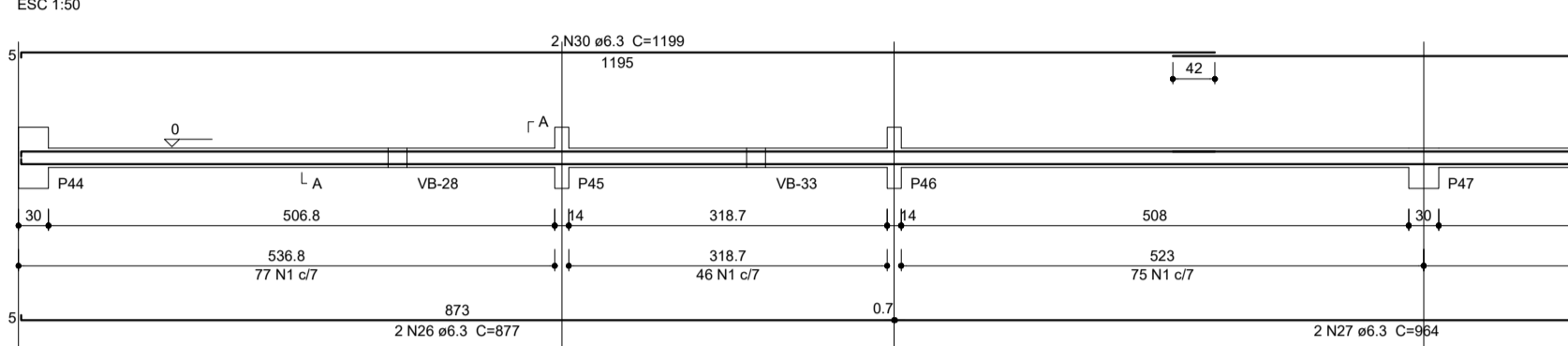
VB-8



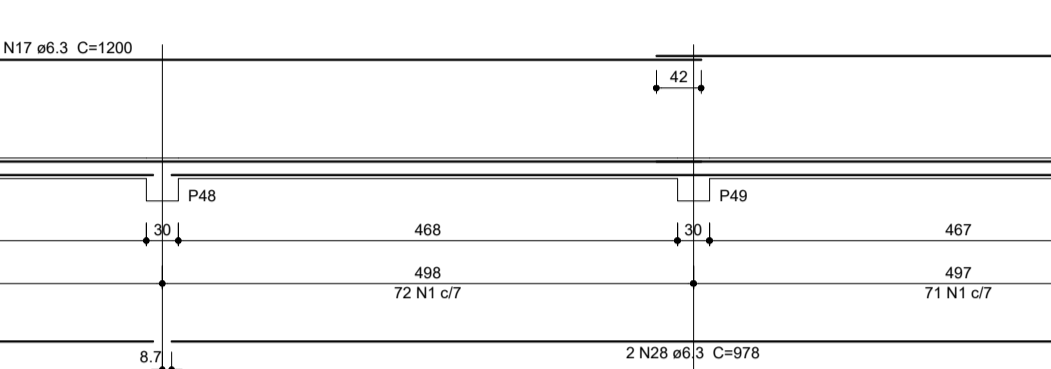
VB-26



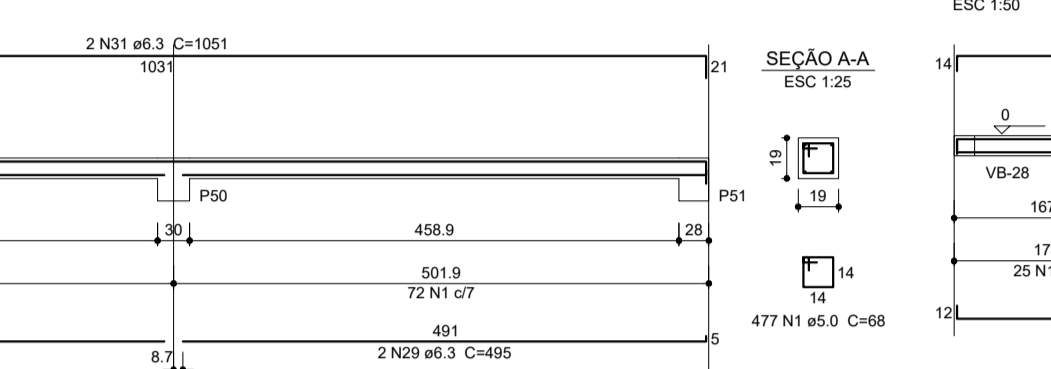
VB-7



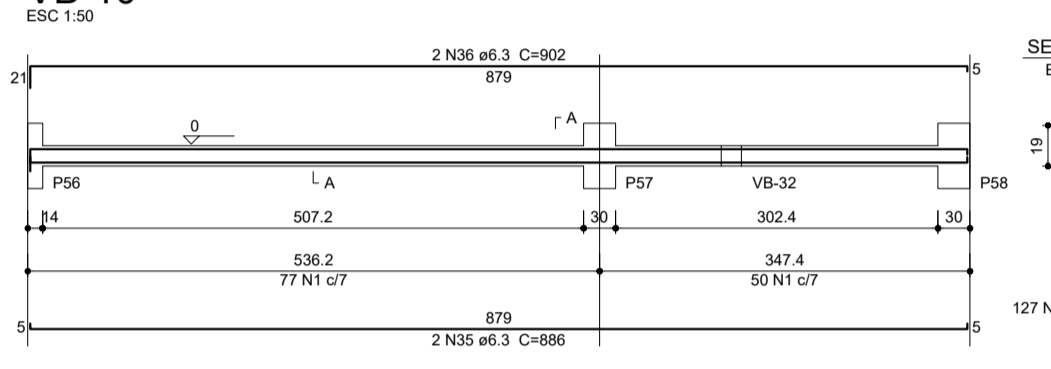
VB-9



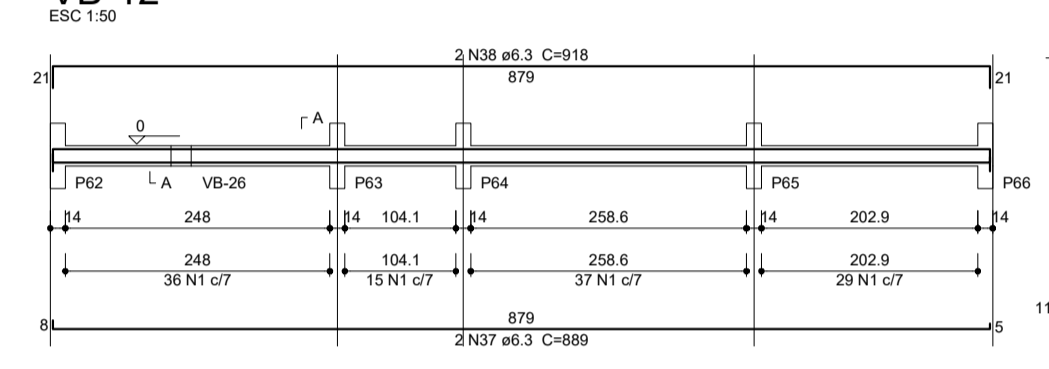
VB-11



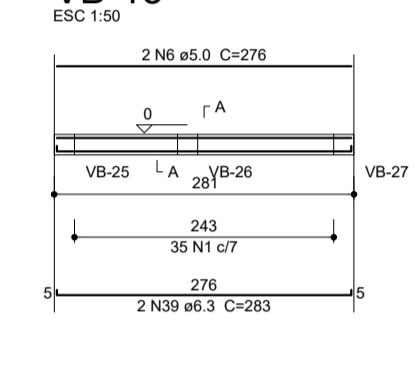
VB-10



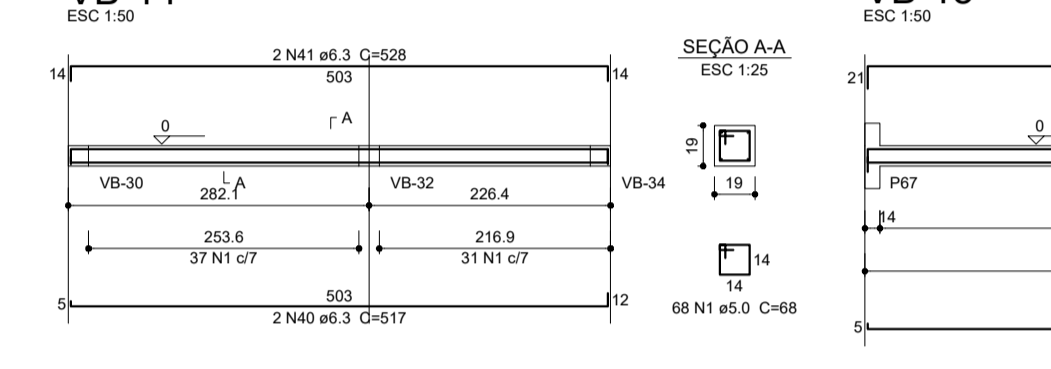
VB-12



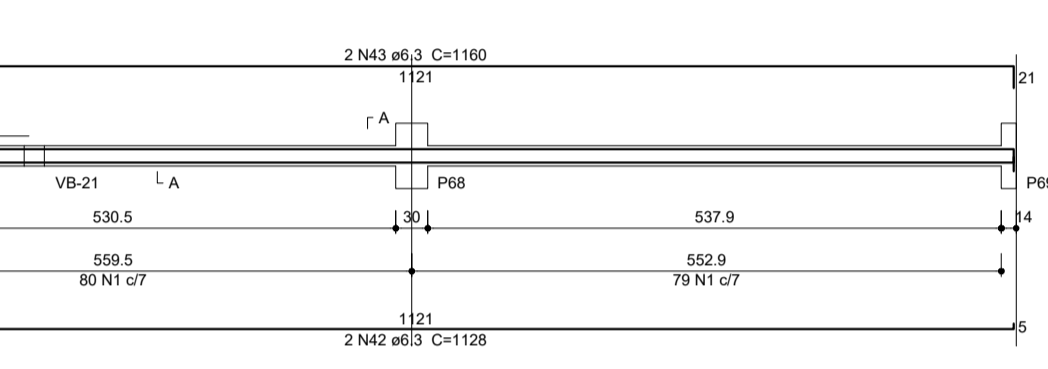
VB-13



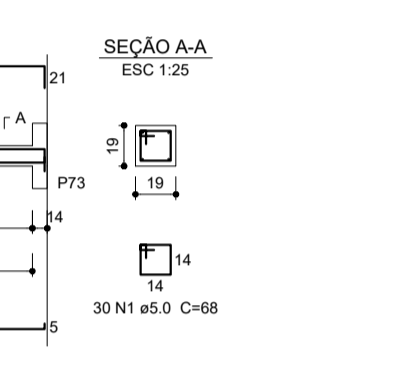
VB-14



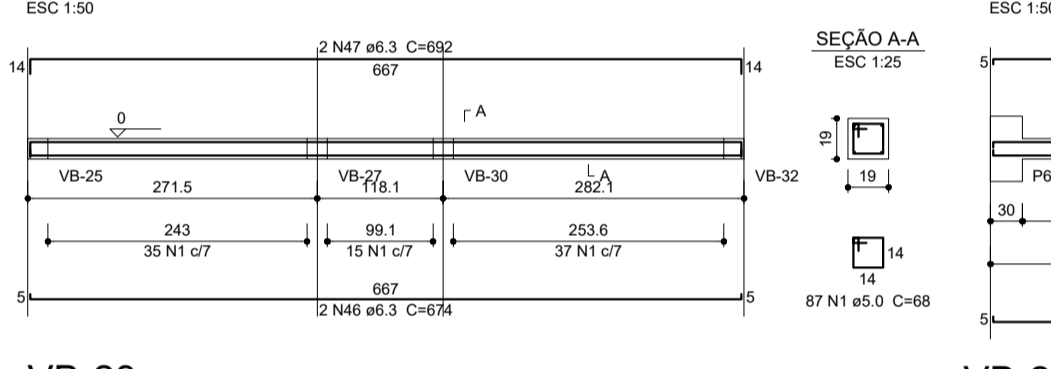
VB-15



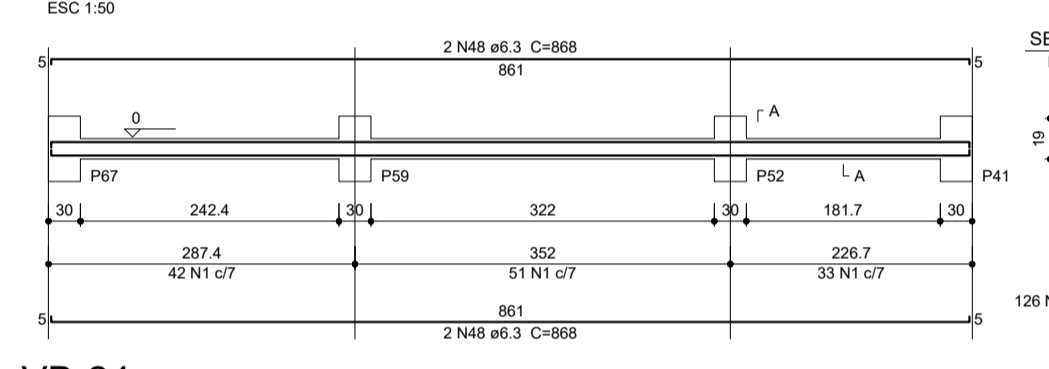
VB-16



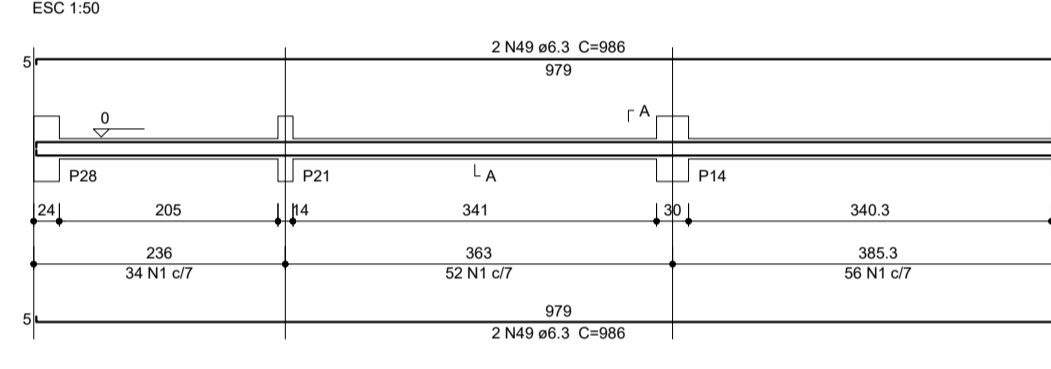
VB-17



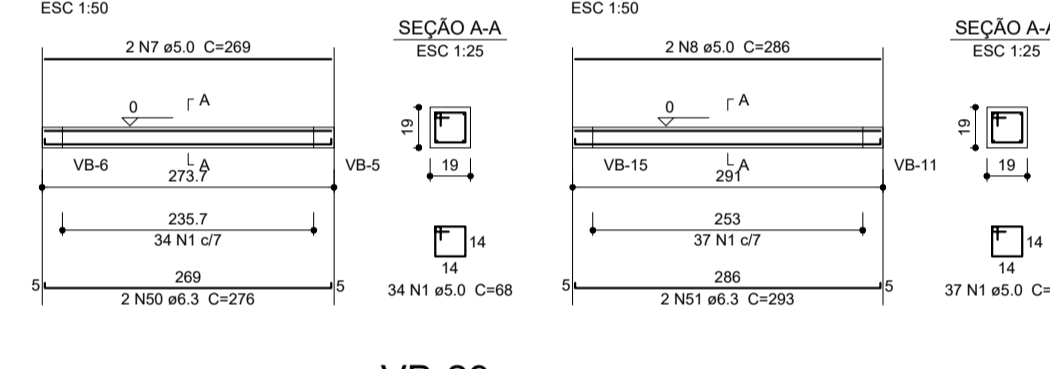
VB-18



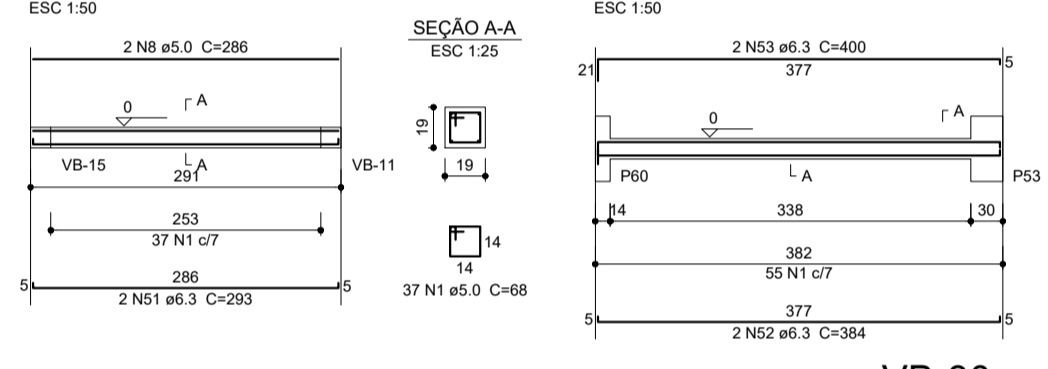
VB-19



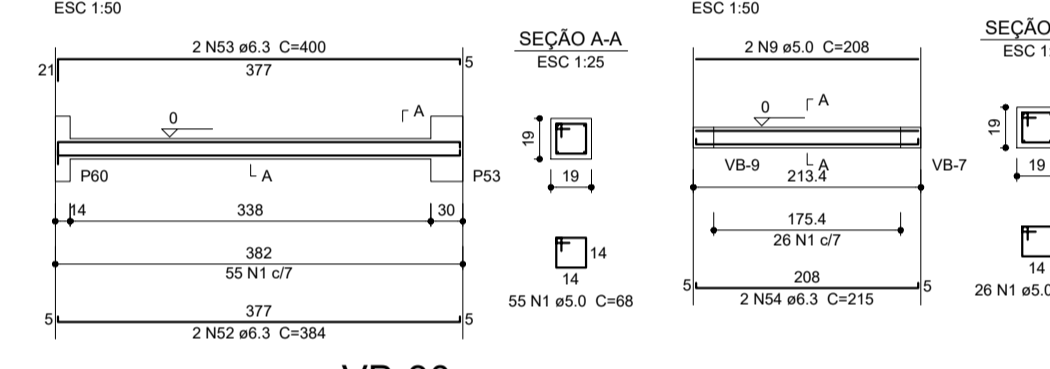
VB-20



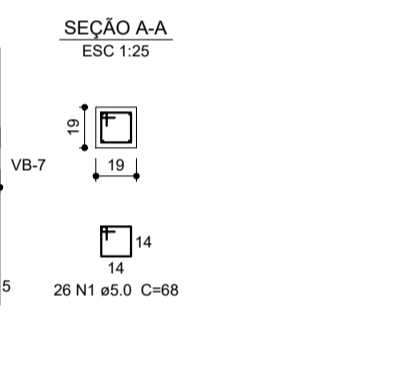
VB-21



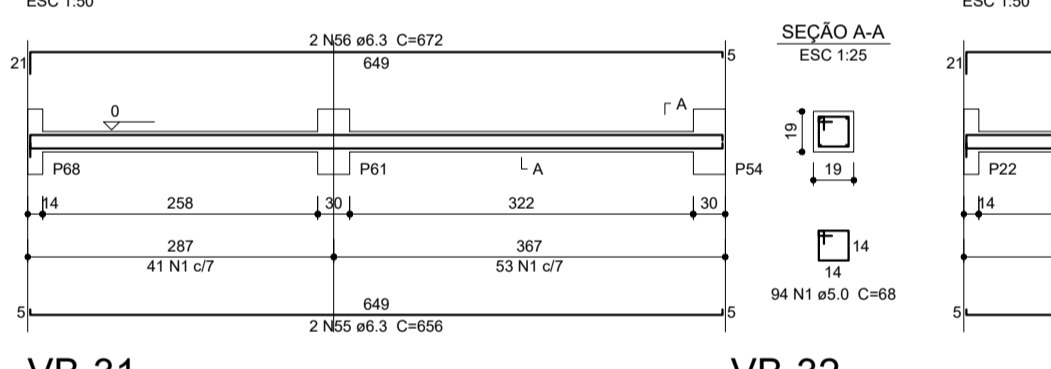
VB-22



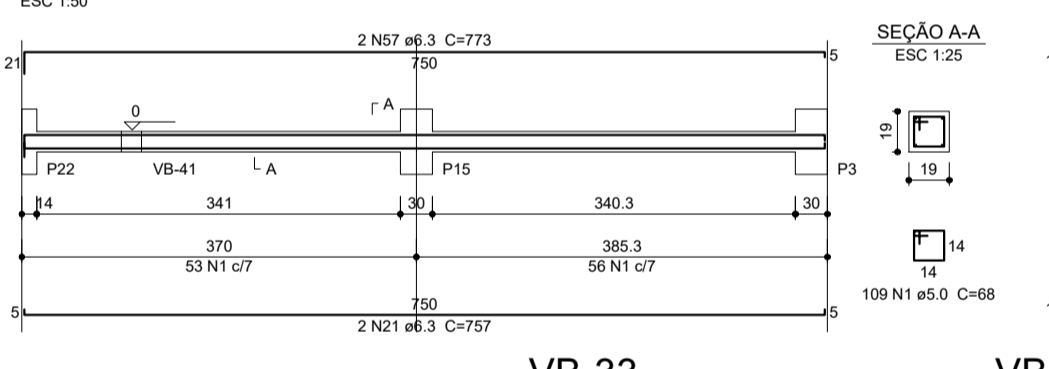
VB-28



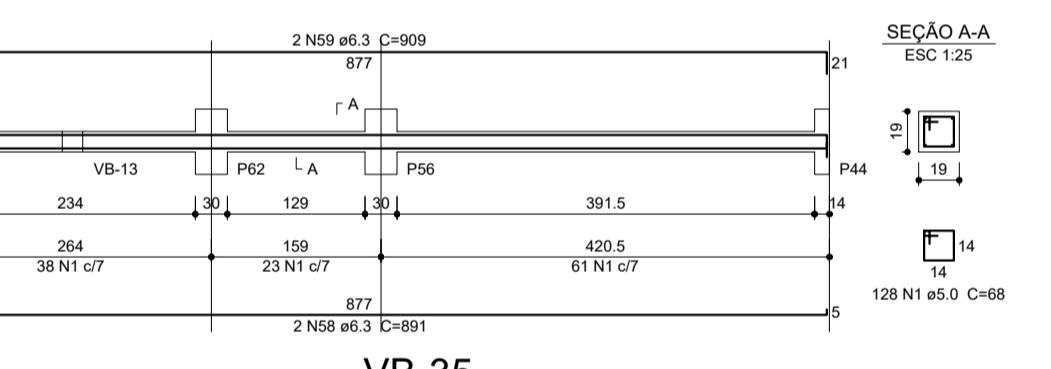
VB-23



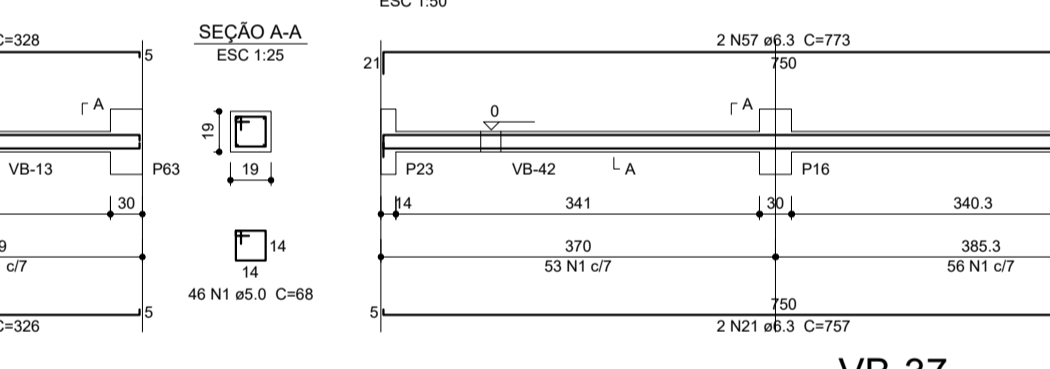
VB-24



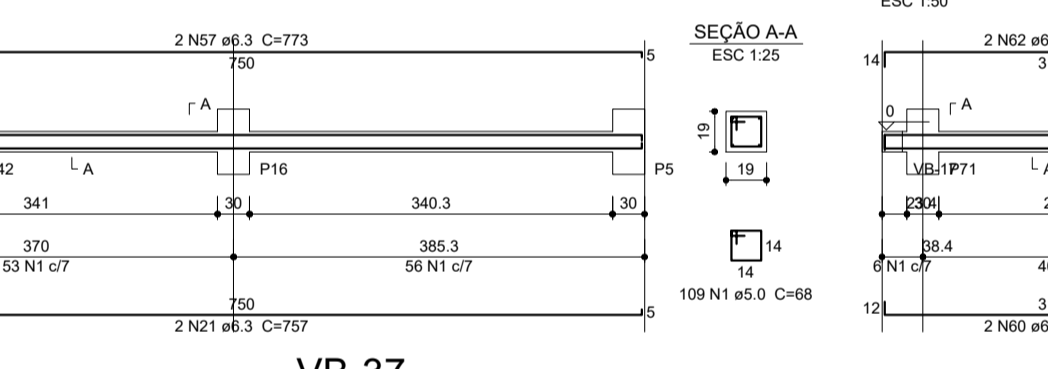
VB-25



VB-27



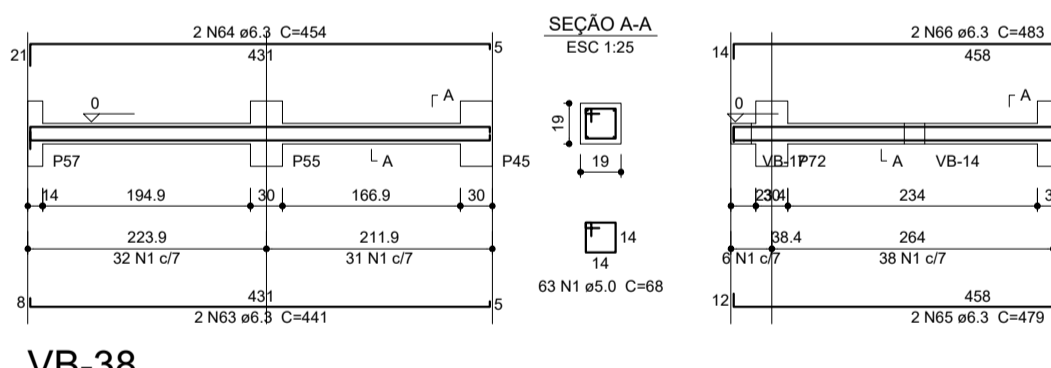
VB-29



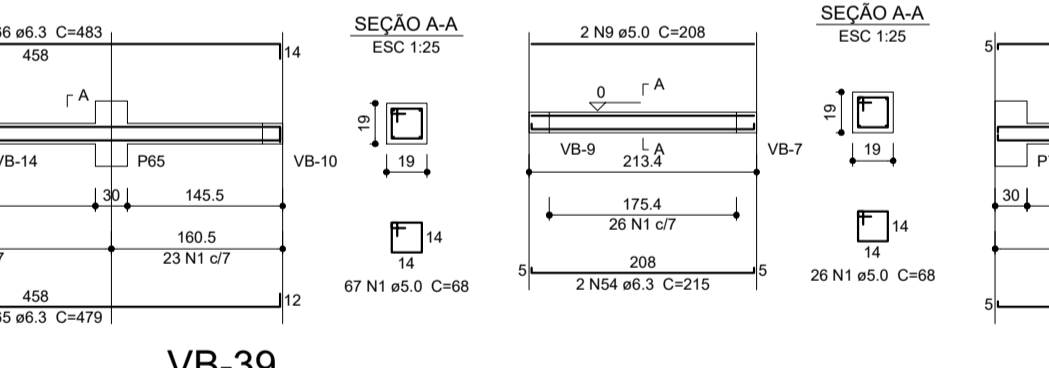
VB-30



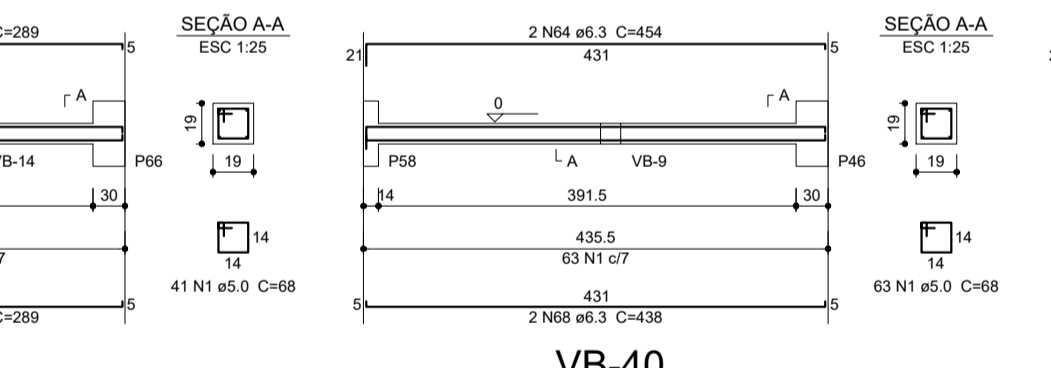
VB-31



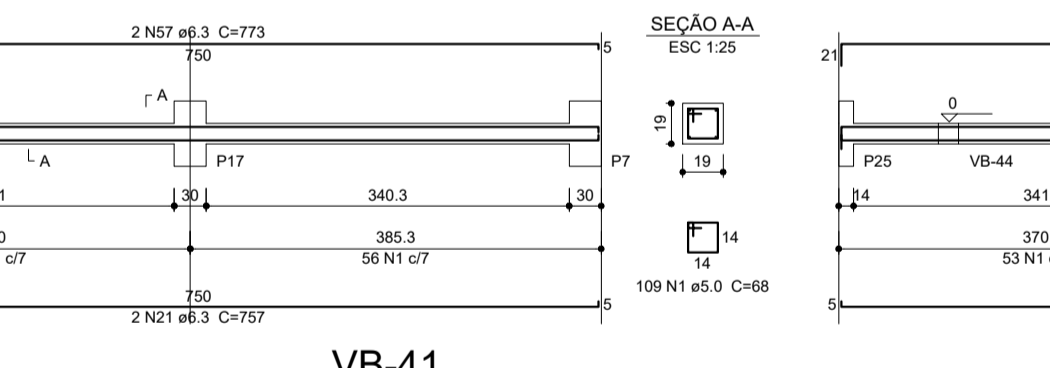
VB-32



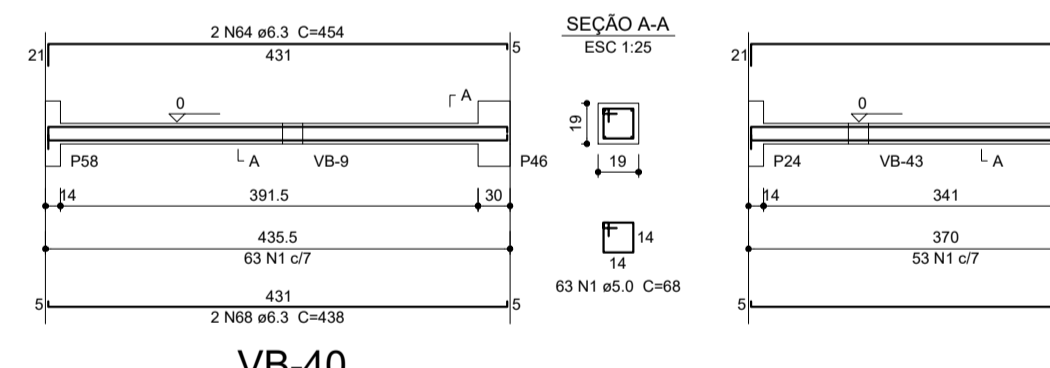
VB-33



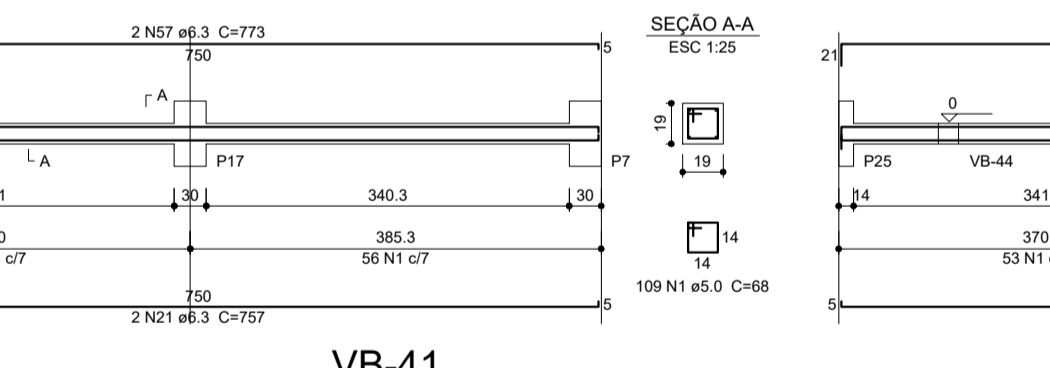
VB-34



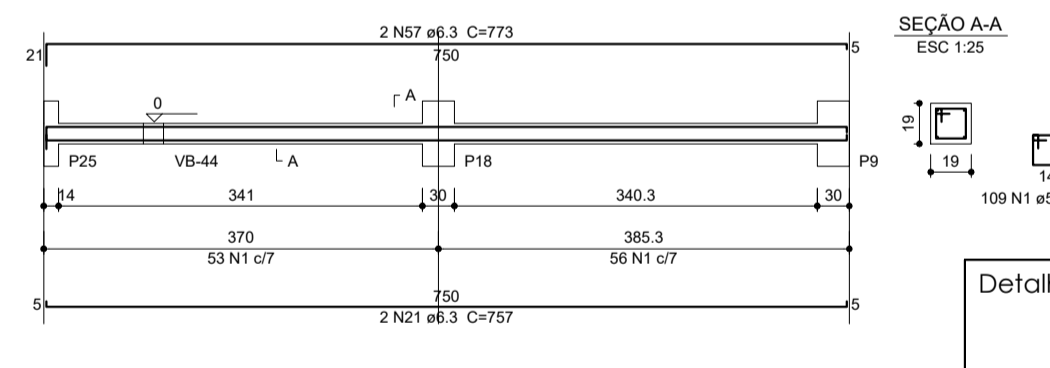
VB-35



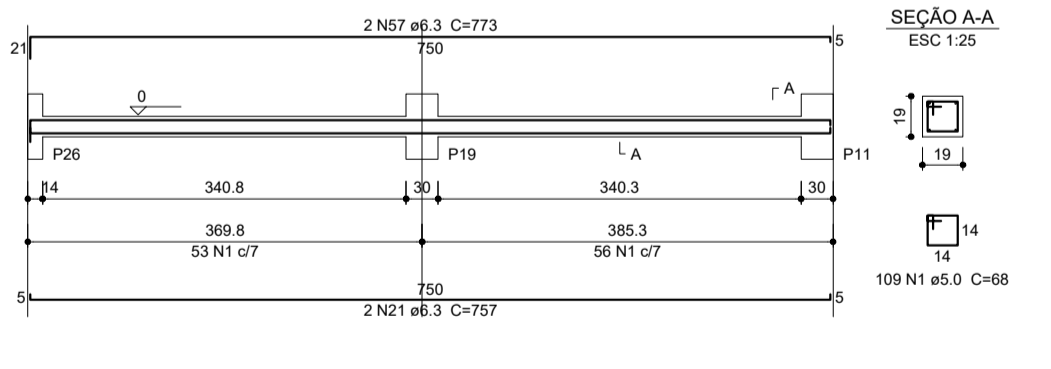
VB-36



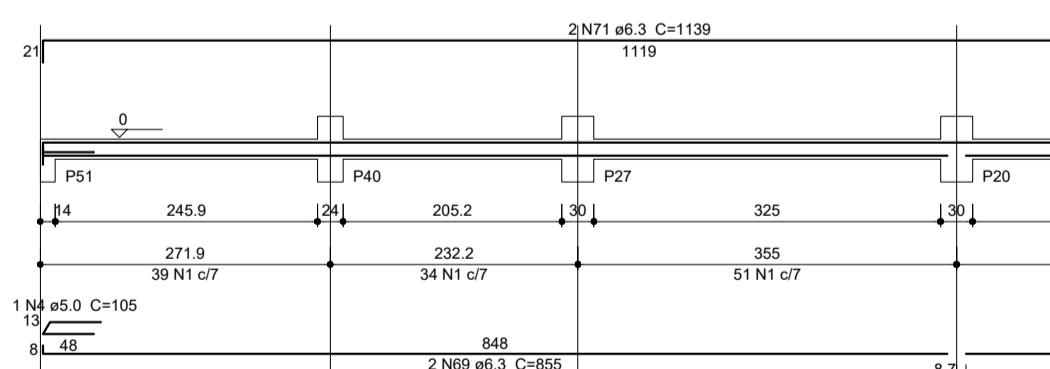
VB-37



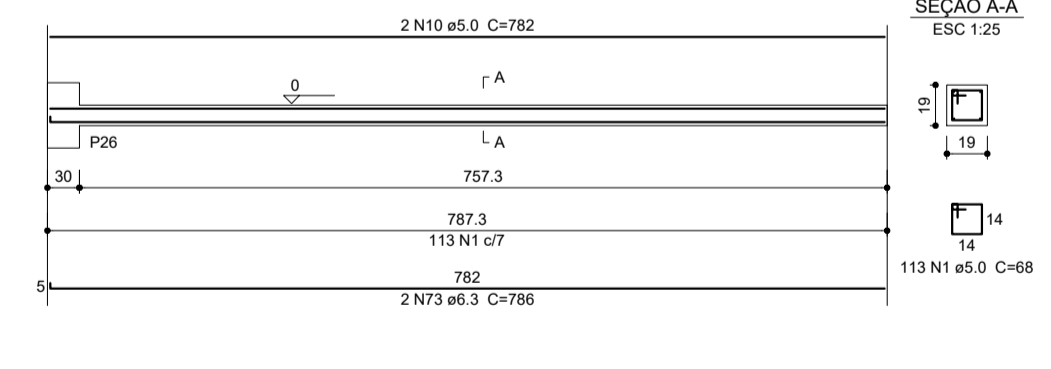
VB-38



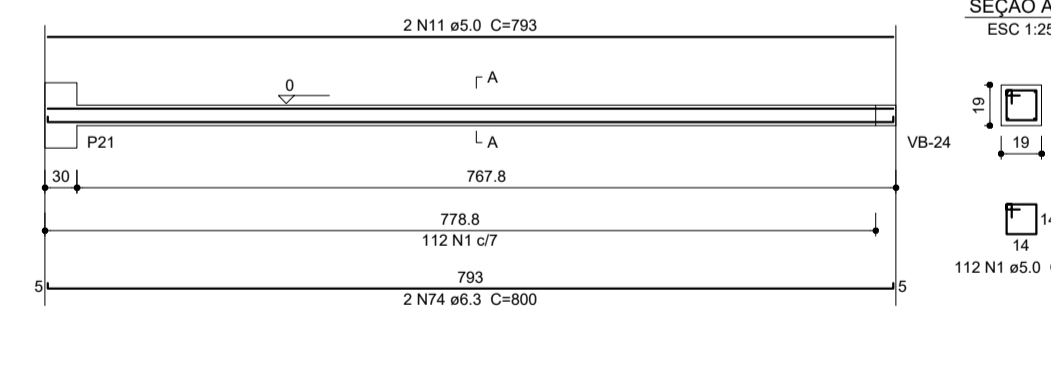
VB-39



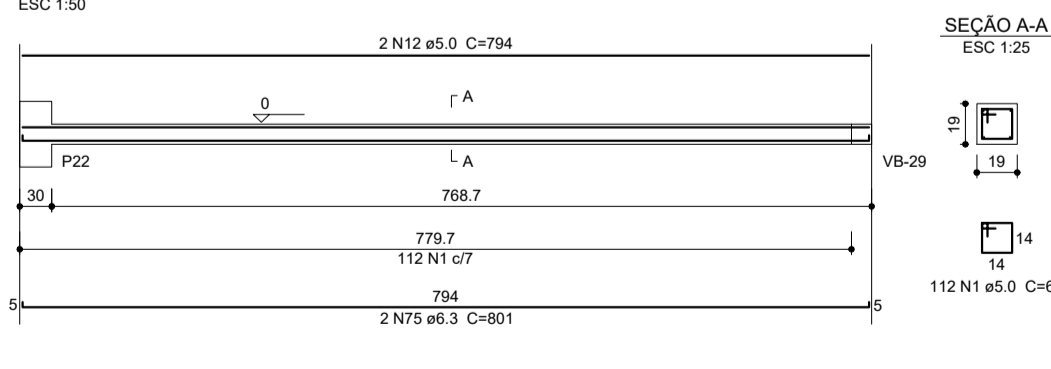
VB-40



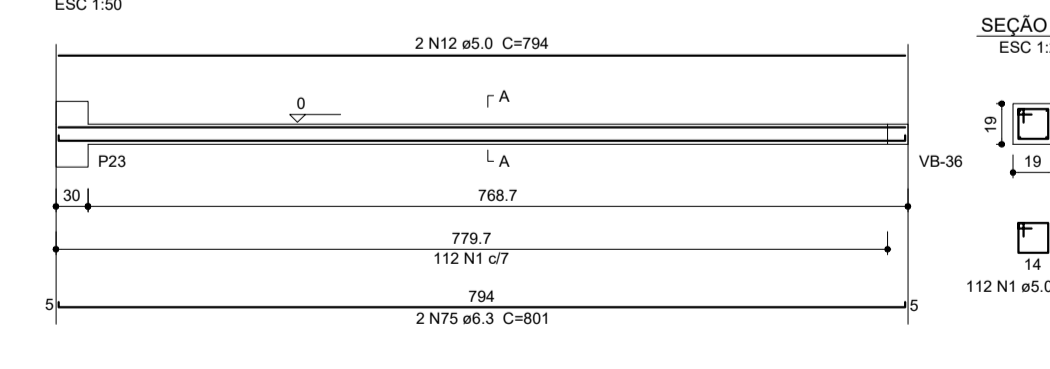
VB-41



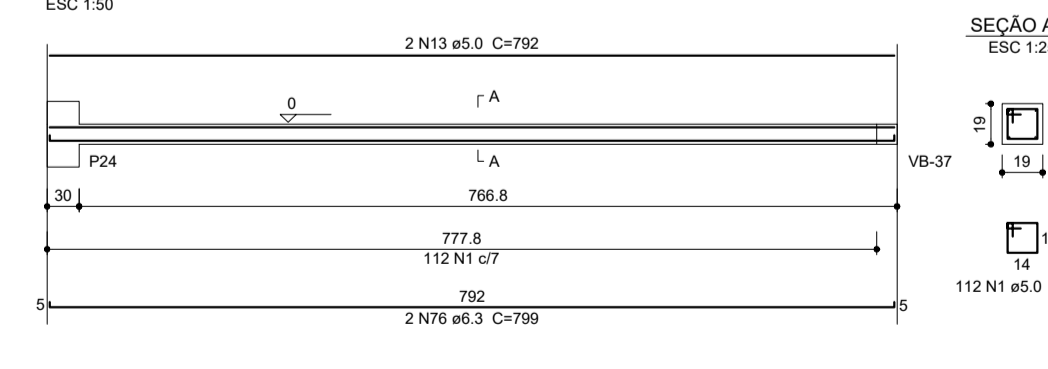
VB-42



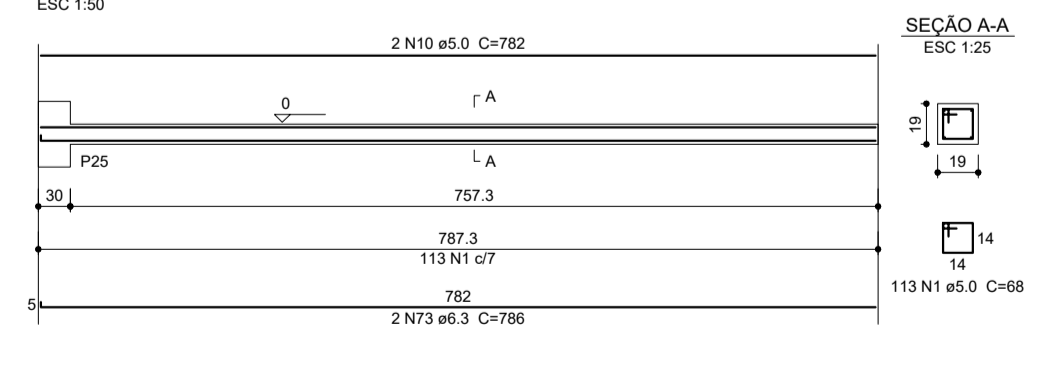
VB-43



VB-44



VB-45



Detalhamento das Vigas Baldrames

PRANCHA: 08/15

PROJETO ESTRUTURAL

PROJETO ESTRUTURAL DE UMA ESCOLA DE 04 SALAS DE AULA  
LOCALIZAÇÃO: SEDE DO MUNICÍPIO DE ALHANDRA-PB  
BARRIO ACAS

PROPRIETÁRIO: PREFEITURA MUNICIPAL DE ALHANDRA-PB

ACÓES:	CONCRETO:	CLASSE DE AGRESSIVIDADE:
CA - 50 e CA - 60	25 Mpa	I - FRACA

PROPRIETÁRIO: PREFEITURA MUNICIPAL DE ALHANDRA-PB

RESPONSÁVEL TÉCNICO:

REVISÃO Nº	DATA	DESCRIÇÃO
00	05/12/2022	EMISSION INICIAL

NORMAS INCIDENTES SOBRE O PROJETO:  
NBR 6122 - PROJETO E EXECUÇÃO DE FUNDAÇÕES, 20/09/2010.  
NBR 6118 - PROJETO DE ESTRUTURAS DE CONCRETO - PROCEDIMENTO, 07/08/2014.  
NBR 6120 - CÁRCIAS PARA CÁLCULO DE ESTRUTURAS DE EDIFICAÇÕES, 30/11/1980.  
ERRATA EM 30/04/2020.  
NBR 8681 - AÇÕES DE SEGURANÇA NAS ESTRUTURAS, PROCEDIMENTO, 31/03/2004.  
NBR 41432 - EXIGÊNCIAS DE RESISTÊNCIA AO FOGO DE ELEMENTOS CONSTRUTIVOS DE EDIFICAÇÕES - PROCEDIMENTO, 30/11/2001.  
NBR 15200 - PROJETO DE ESTRUTURAS DE CONCRETO EM SITUAÇÃO DE INCÊNDIO, 26/05/2012.